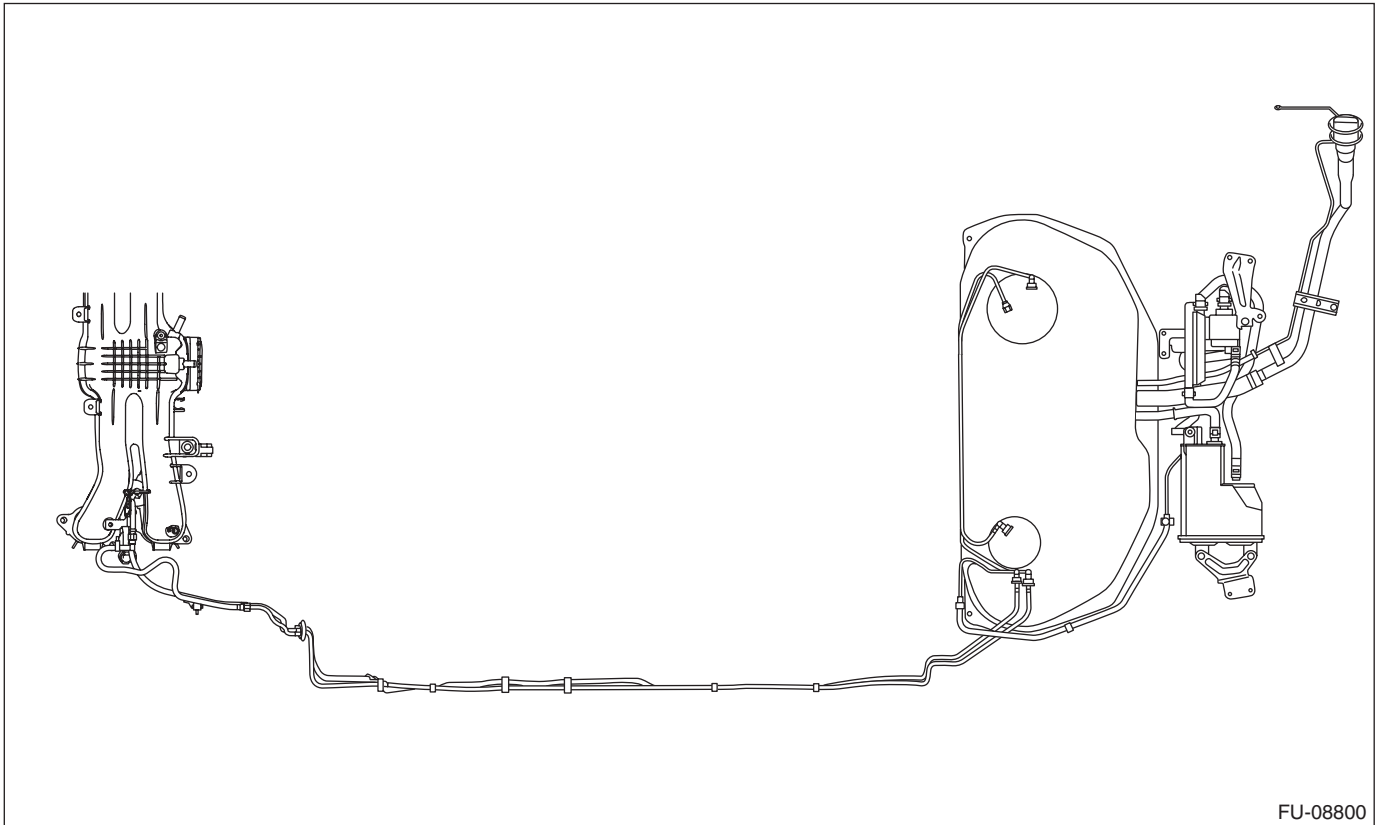


Fuel Delivery and Evaporation Lines

FUEL INJECTION (FUEL SYSTEMS)

32. Fuel Delivery and Evaporation Lines

A: REMOVAL



FU-08800

WARNING:

Place “NO OPEN FLAMES” signs near the working area.

CAUTION:

Be careful not to spill fuel.

- 1) Release the fuel pressure. <Ref. to FU(H4DO(w/o HEV))-109, RELEASING OF FUEL PRESSURE, PROCEDURE, Fuel.>
- 2) Open the fuel filler lid and remove the fuel filler cap.

NOTE:

This operation is required to release the inner pressure of the fuel tank.

- 3) Remove the floor mat. <Ref. to EI-160, REMOVAL, Floor Mat.>

Fuel Delivery and Evaporation Lines

FUEL INJECTION (FUEL SYSTEMS)

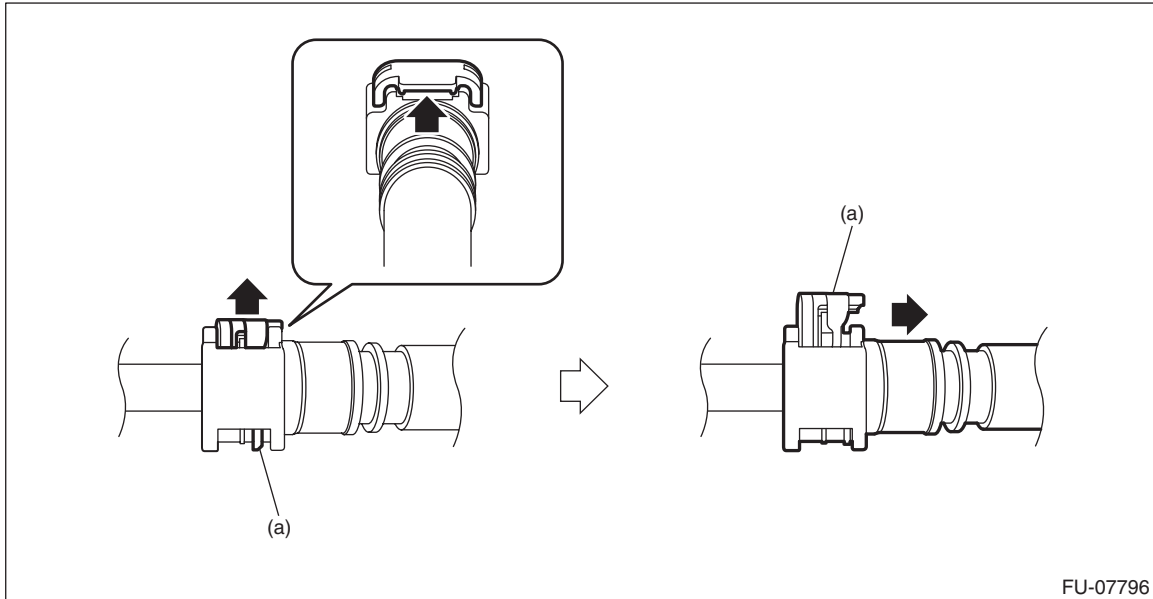
4) In the engine compartment, disconnect the fuel delivery tube (A) and evaporation hose (B).

CAUTION:

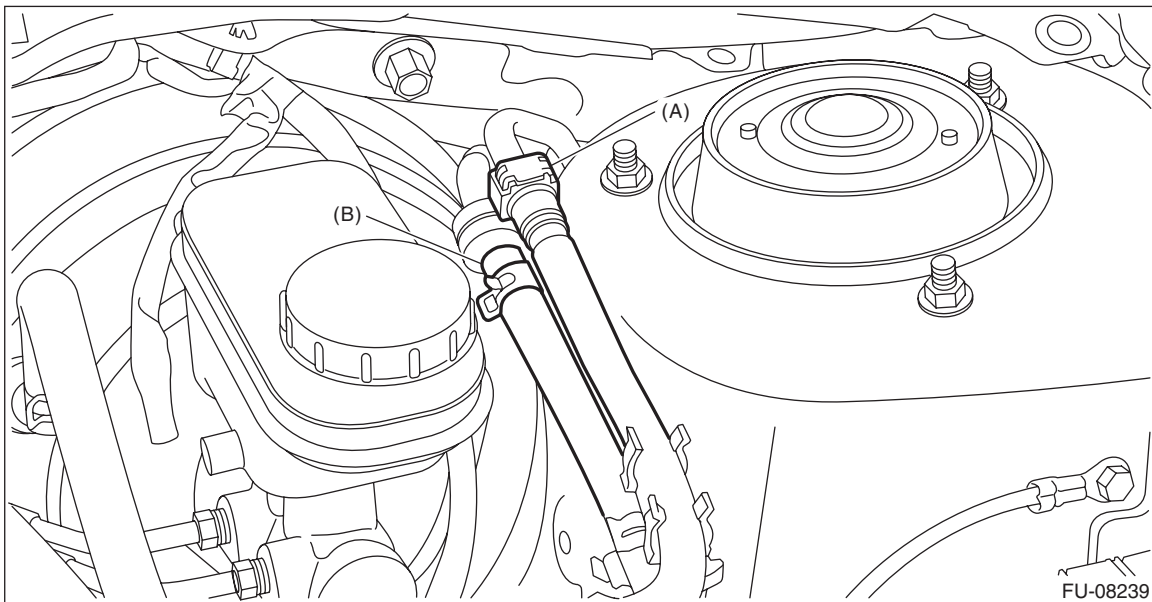
- Be careful not to spill fuel.
- Catch the fuel from the tubes using a container or cloth.

NOTE:

Disconnect the quick connector as shown in the figure.



(a) Slider



5) Remove the fuel tank. <Ref. to FU(H4DO(w/o HEV))-116, REMOVAL, Fuel Tank.>

Fuel Delivery and Evaporation Lines

FUEL INJECTION (FUEL SYSTEMS)

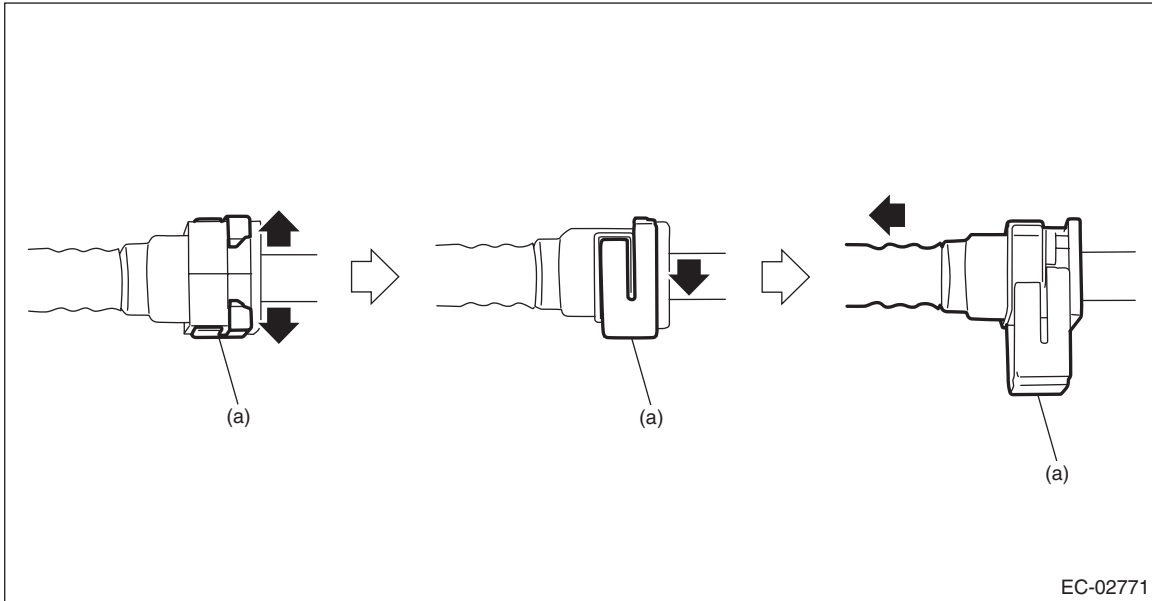
6) Disconnect the quick connector, and remove the fuel delivery tube and jet pump tube from the fuel tank.

CAUTION:

- Be careful not to spill fuel.
- Catch the fuel from the tubes using a container or cloth.

NOTE:

Disconnect the quick connector as shown in the figure.



(a) Slider

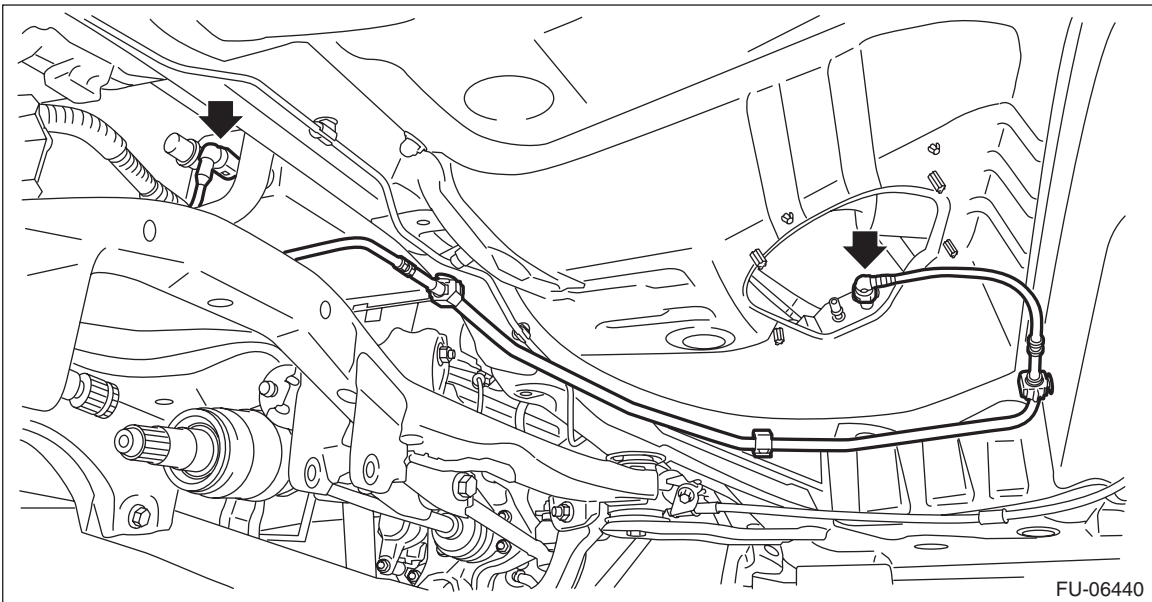
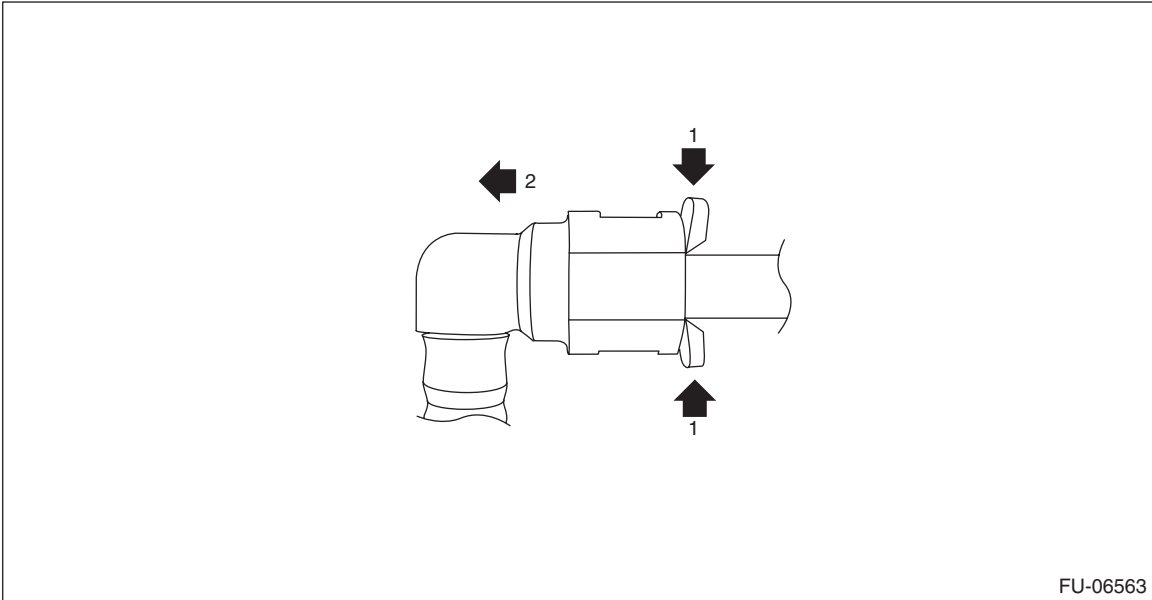
Fuel Delivery and Evaporation Lines

FUEL INJECTION (FUEL SYSTEMS)

7) Disconnect the quick connector and remove the purge pipe.

NOTE:

Disconnect the quick connector as shown in the figure.



8) Remove the fuel pipe assembly from vehicle.

Fuel Delivery and Evaporation Lines

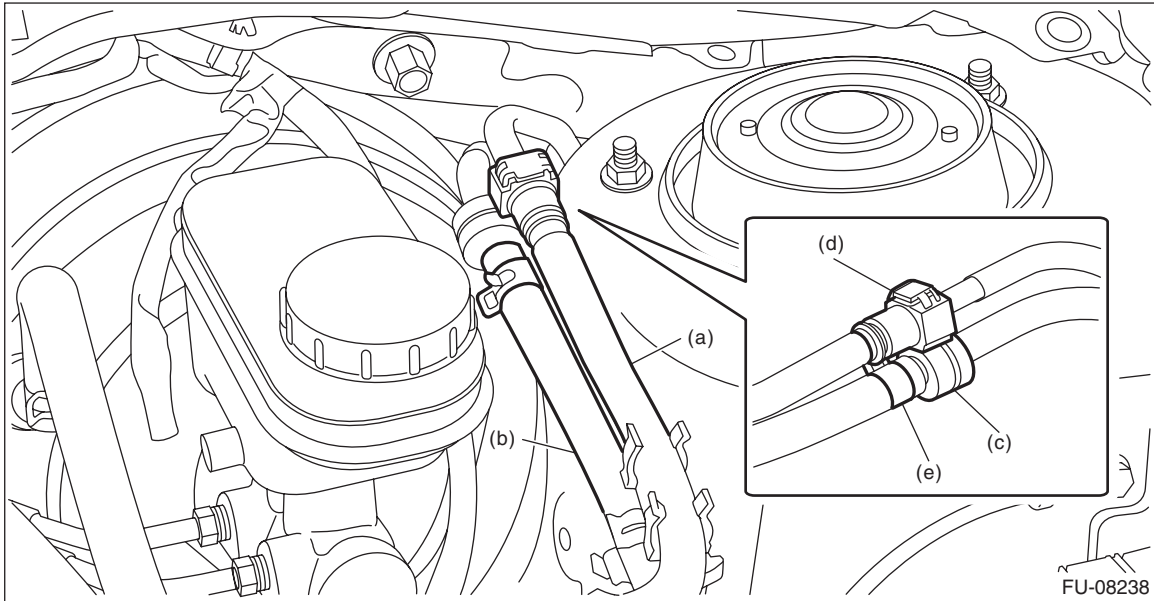
FUEL INJECTION (FUEL SYSTEMS)

B: INSTALLATION

Install in the reverse order of removal while being careful of the following.

NOTE:

When connecting the fuel delivery tube (a) and evaporation hose (b), let the bushing (c) contact the quick connector (d) of fuel delivery tube to prevent the clip (e) from contacting the quick connector (d).

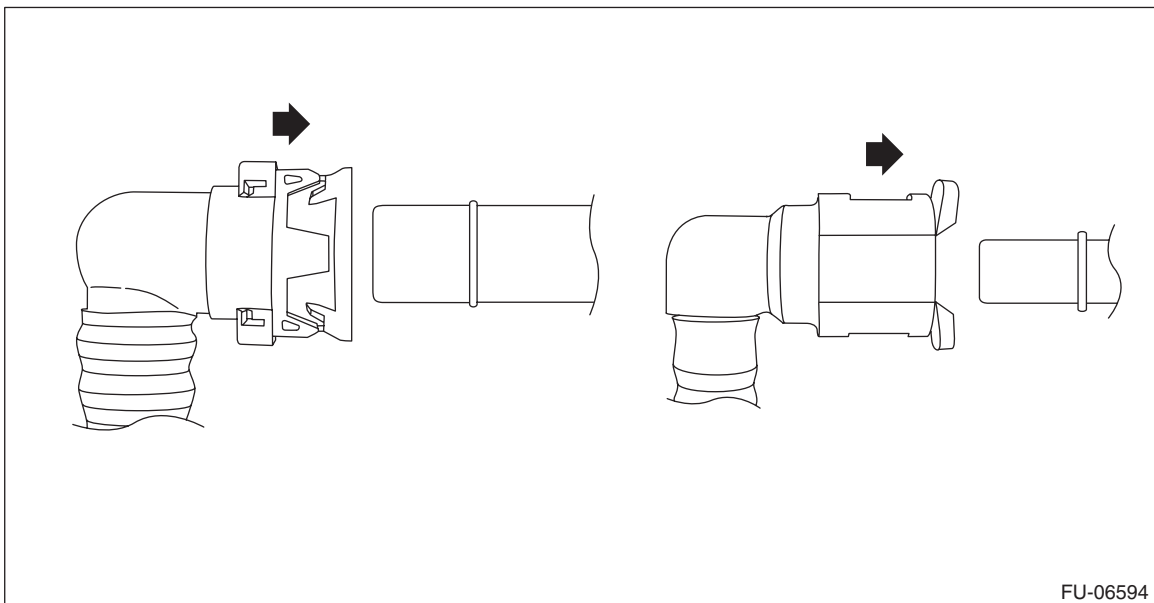


1. CONNECTING THE EVAPORATION LINE QUICK CONNECTOR

Connect the quick connector as shown in the figure.

CAUTION:

- Check that there is no damage or dust on the quick connector. If necessary, clean the seal surface of the pipe.
- Make sure that the quick connector is securely connected.

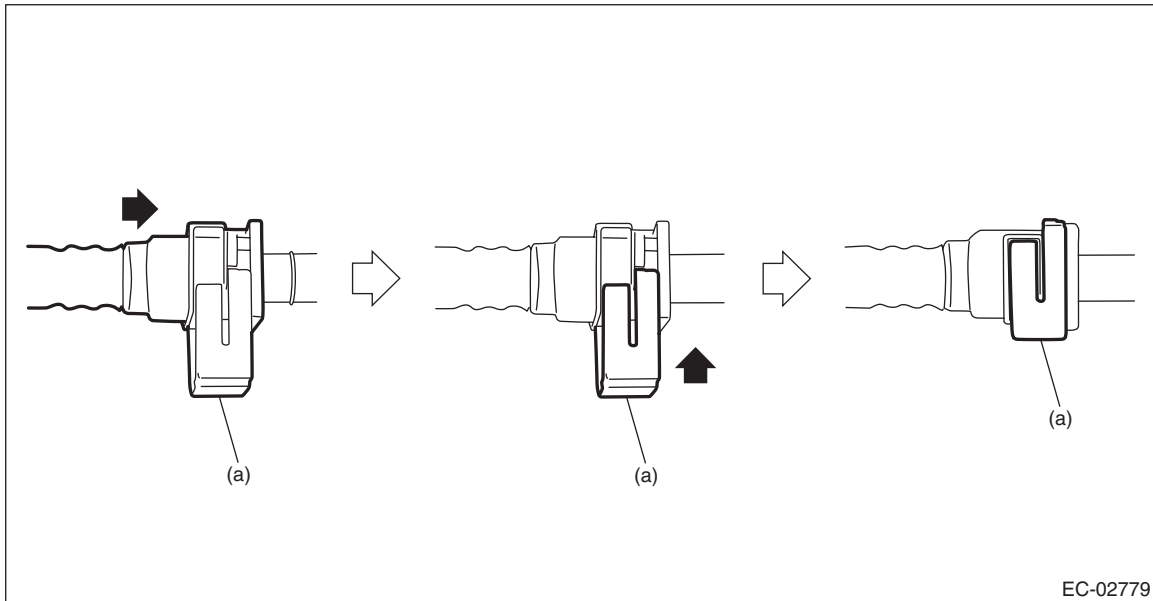


2. CONNECTING THE FUEL LINE QUICK CONNECTOR

Connect the quick connector as shown in the figure.

CAUTION:

- Check that there is no damage or dust on the quick connector. If necessary, clean the seal surface of the pipe.
- When connecting the quick connector, make sure to insert it all the way in before locking the slider.
- When it is difficult to lock the slider, check that the connector is fully inserted.
- After locking the slider, check again that the quick connector is securely connected.



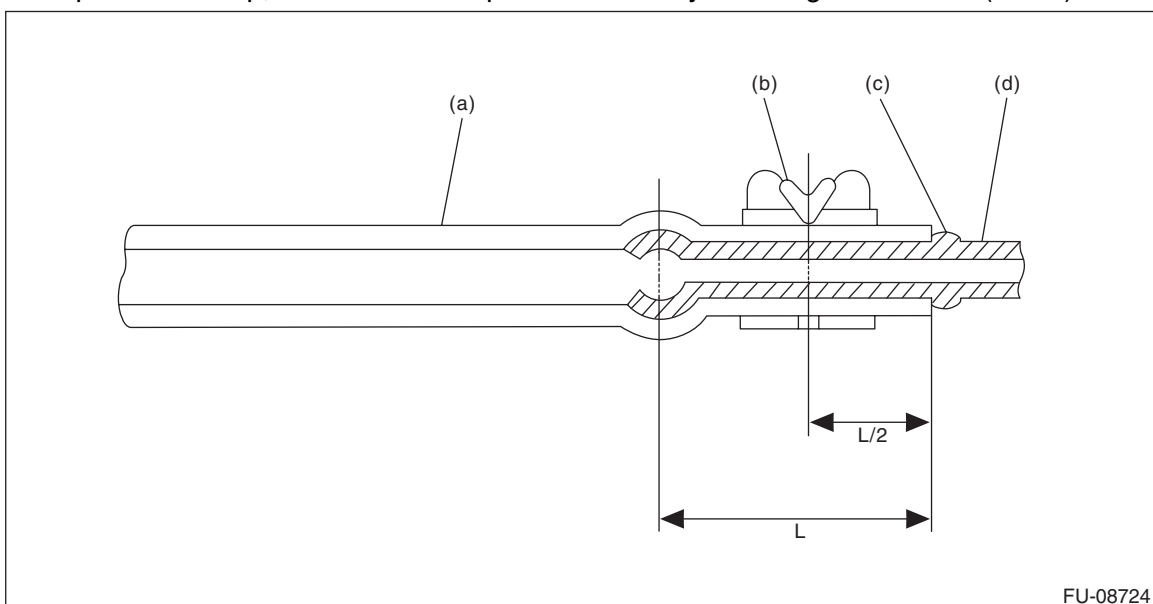
(a) Slider

3. EVAPORATION HOSE CONNECTION

Connect the evaporation hose by inserting it to the pipe until the hose reaches the spool or bump.

NOTE:

If there is no spool nor bump, connect the evaporation hose by inserting it at 28 mm (1.1 in) to the pipe.



(a) Hose

(c) Spool or bump

(d) Pipe

(b) Clip

Fuel Delivery and Evaporation Lines

FUEL INJECTION (FUEL SYSTEMS)

C: INSPECTION

- 1) Check that the fuel pipe has no deformation, cracks or other damages.
- 2) Check that the hose and tube have no cracks, damage or loose part.